

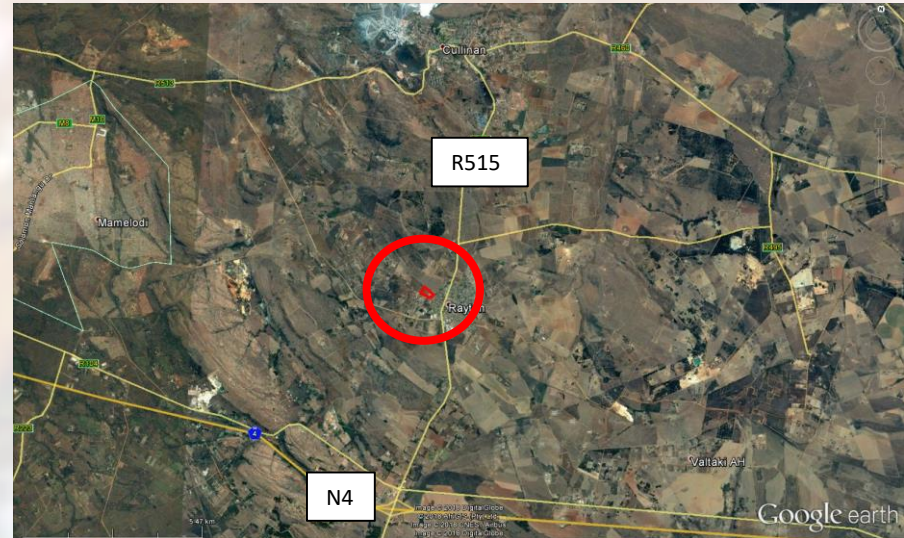
RAYTON CEMETERY

CONSTRUCTION OF A CEMETERY AND RELATED INFRASTRUCTURE ON REMAINING EXTENT OF PORTION 136 OF THE FARM ELANDSHOEK 337-JR

GAUT: 002/15 – 16/E0151

Location:

- ❖ Total site area – 8.79ha
- ❖ The site is located close to the R515 that links to the N4 to **east of Rayton**, located on the edge of the urban development
- ❖ Easily accessible from Mopanie road
- ❖ Close to civic centre



A beautiful private tranquil place



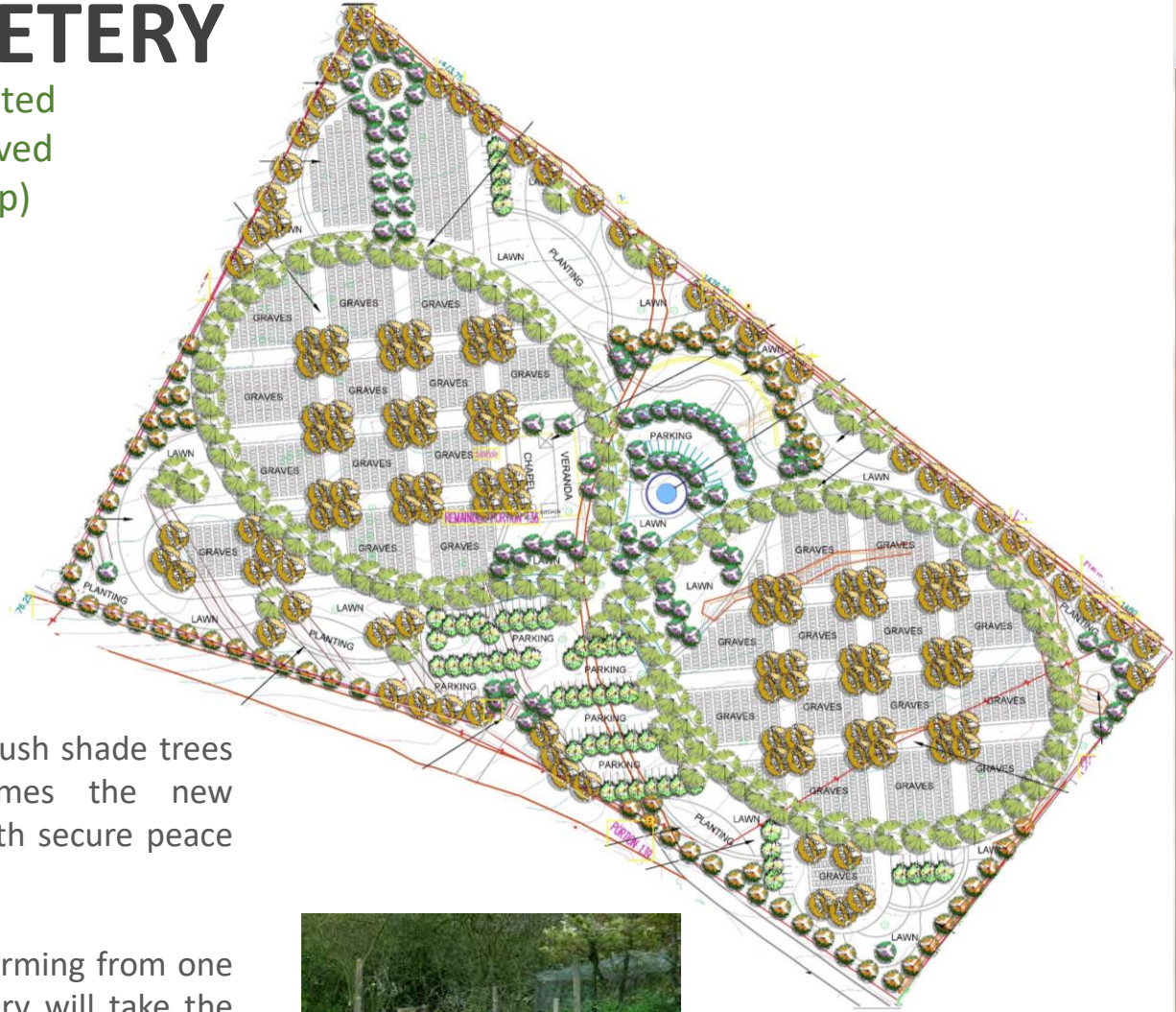
RAYTON CEMETERY

- ❖ Graves
 - ❖ Plaques of remembrance
 - ❖ Soft landscaping
- Unlimited
Approved
(3 deep)

- ❖ Coverage – 1.5%
- ❖ FAR – 0.015



- ❖ The tranquil cemetery with its lush shade trees and green meadows welcomes the new residents & provide families with secure peace of mind
- ❖ Like the butterfly effect, transforming from one world to the next. This cemetery will take the families with their deceased relative from the ceremony to their memorial grave of choice.
- ❖ The park provides a peaceful and dignified sense of place. It is secured and well laid out.



RAYTON CEMETERY: CONSTRUCTION OF A CEMETERY AND RELATED INFRASTRUCTURE ON REMAINING EXTENT OF PORTION 136 OF THE

RAYTON CEMETERY

- ❖ Multiple burial options
- ❖ Safe cremations
- ❖ Ash grave sections
- ❖ Chapel hire & ablution facilities
- ❖ Restaurant/Lapa hire
- ❖ Flower arrangements
- ❖ Undertakers
- ❖ Catering all funeral arrangements
- ❖ Tranquil seating areas
- ❖ Water feature elements & Memorial wall of remembrance
- ❖ Passive and active recreation areas of interest



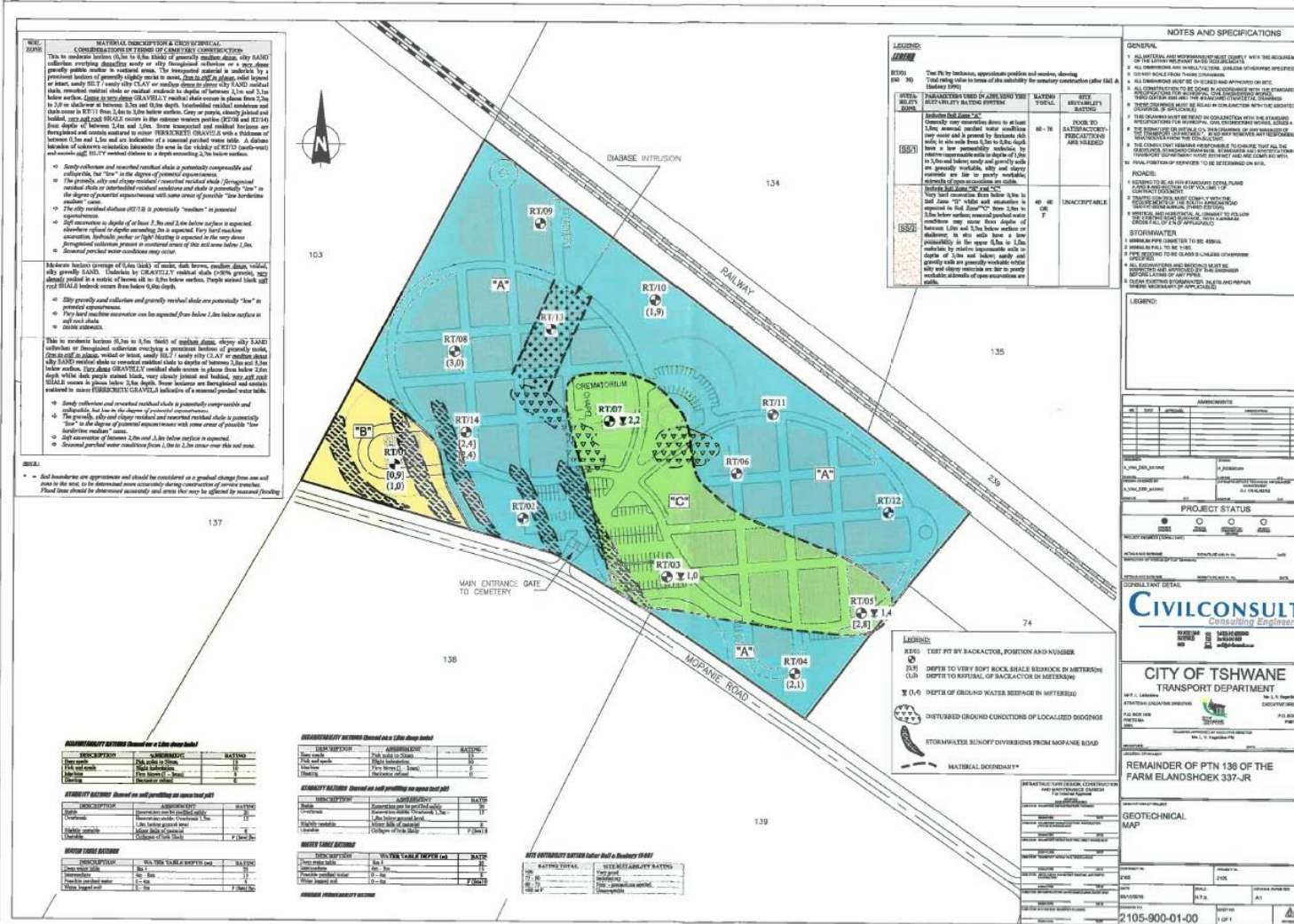
2 LANDSCAPE SITE POSSIBILITIES



RAYTON CEMETERY

Geo-technical constraints on site

Area marked in blue are suitable for gravesites



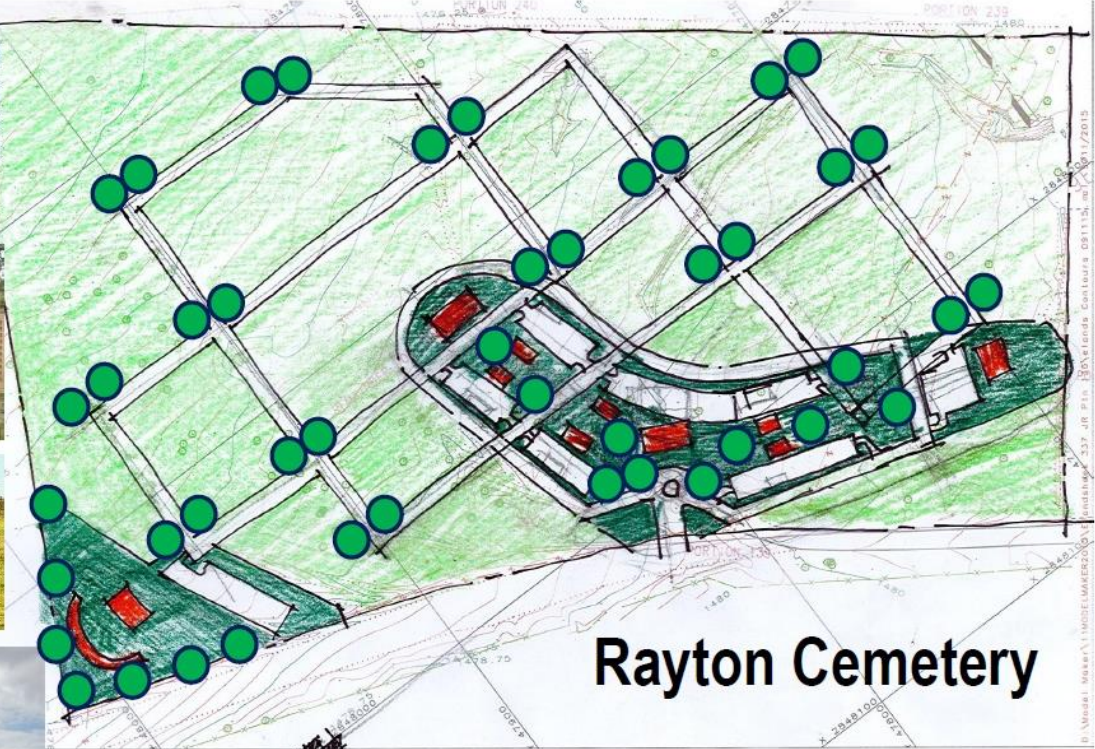
Green & yellow area are suitable for development

RAYTON CEMETERY: CONSTRUCTION OF A CEMETERY AND RELATED INFRASTRUCTURE ON REMAINING EXTENT OF PORTION 136 OF THE

FARM ELANDSHOEK 337-JR. GAUT: 002/15-16/E0151

RAYTON CEMETERY

❖ Amended plan due to geological constraints












Rayton Cemetery

LEAP
Dr. Gwen Theron
Pr. Arch No 97082
Landscape Architect
Environmental Planner
Imbitlana cc 2010/089810/23
P.O. Box 13185
Hatfield 0028
FAX: 086 606 6130
012 344 3582
083 302 2116
gwen.theron@leapenviro.co.za

NOTES
System S-380-LOGG-WGG
Contoura @ 0,25 m

WALL OF REMEMBRANCE



RAYTON CEMETERY: CONSTRUCTION OF A CEMETERY AND RELATED INFRASTRUCTURE ON REMAINING EXTENT OF PORTION 136 OF THE

RAYTON CEMETERY

- ❖ Townplanning approval obtained
- ❖ Record of decision from GDARD received 2016.07.07
- ❖ Record of Decision from Heritage Council received 2016.05.18
- ❖ Service level agreement obtained
- ❖ Services approvals
 - ❖ Traffic impact assessment
 - ❖ Sewer
 - ❖ Water
 - ❖ Electricity



RAYTON CEMETERY

- ❖ Townplanning approval obtained
- ❖ The Authorized Official's Committee duly authorized hereby approves in terms of the provisions of section 56 of the Town-planning and Townships Ordinance, 1986 read with section 2(2) and the other provisions of the Spatial Planning and Land Use Management Act, 2013 the application for the amendment of the Tshwane Town-planning scheme, 2008 by the rezoning of the remainder of portion 136 of the farm Elandshoek 337-JR from "Agriculture" to "Special" for a cemetery.
- ❖ Record of decision from GDARD received 2016.07.07
- ❖ GAUT: 002/15 – 16/E0151
- ❖ Granting of Environmental Authorization for the Proposed Rayton Cemetery on the Remaining extent of Portion 136 of the Farm Elandshoek 337-JR, City of Tshwane Metropolitan Municipality



RAYTON CEMETERY

- ❖ Record of decision from Heritage Council received 2016.05.18
- ❖ Considering that no significant archaeological heritage resources occur within the study area, and that the type of project is unlikely to disturb potential paleontological resources, the SAHRA Archaeology, Palaeontology and Meteorites Unit has no objections to this proposed development.
- ❖ Services approvals:
 - ❖ Traffic impact assessment
 - ❖ Access to the proposed development will be from Mopanie road and the access will be designed and constructed according to the standards and specifications of City of Tshwane



RAYTON CEMETERY

❖ Services approvals:

❖ Sewer

- ❖ A package plant and sewer will be installed in the proposed development and no servitudes will be required

❖ Water

- ❖ The internal reticulation of the proposed development will connect directly to the borehole, no servitudes are required

❖ Electricity

- ❖ The proposed development will be supplied with electricity from the City of Tshwane Power supply network.
- ❖ The external design will adhere to COT's standards and requirements. The internal network is earmarked for private ownership and operation.



RAYTON CEMETERY

❖ SG - Diagram

