

...to comply with SANS 10007:2011.
 4.2 Safety distances: This building will comply.
 4.3 Division area: No division wall exceeding 2500 mm.
 4.4 Fire load: The fire load will be less than 150 kg/m².
 4.5 Escape routes: The building will comply with SANS 10007:2011.

4.6 Protection of openings: Block A: 40 mm solid core doors with self-closing device will be installed where the fire rating is required. Block B: 40 mm solid core doors with self-closing device will be installed where the fire rating is required. Block C: 40 mm solid core doors with self-closing device will be installed where the fire rating is required.

4.7 Floor coverings: Class 3.
 4.8 Internal finishes: Class 3.
 4.9 Provision of escape routes: The building will comply with SANS 10007:2011. The escape routes will be provided in accordance with the fire safety plan. The escape routes will be provided in accordance with the fire safety plan.

4.10 Dimensions of components of escape routes: The clear width of all exit doors or escape door from rooms must be a minimum of 900 mm. The clear height of all exit doors or escape door from rooms must be a minimum of 2000 mm. The clear width of all escape routes must be a minimum of 1800 mm.

4.11 Stairways and other changes of level along escape routes: A handrail will be provided on either side of all stairs. The handrail will be provided in accordance with the fire safety plan. The handrail will be provided in accordance with the fire safety plan.

4.12 Escalators and coverings: The building will comply with SANS 10007:2011. The escalators will be provided in accordance with the fire safety plan. The escalators will be provided in accordance with the fire safety plan.

4.13 Signage: The building will comply with SANS 10007:2011. The signage will be provided in accordance with the fire safety plan. The signage will be provided in accordance with the fire safety plan.

4.14 Fire-fighting equipment: The building will comply with SANS 10007:2011. The fire-fighting equipment will be provided in accordance with the fire safety plan. The fire-fighting equipment will be provided in accordance with the fire safety plan.

4.15 Fire-fighting equipment: The building will comply with SANS 10007:2011. The fire-fighting equipment will be provided in accordance with the fire safety plan. The fire-fighting equipment will be provided in accordance with the fire safety plan.

4.16 Fire-fighting equipment: The building will comply with SANS 10007:2011. The fire-fighting equipment will be provided in accordance with the fire safety plan. The fire-fighting equipment will be provided in accordance with the fire safety plan.

4.17 Fire-fighting equipment: The building will comply with SANS 10007:2011. The fire-fighting equipment will be provided in accordance with the fire safety plan. The fire-fighting equipment will be provided in accordance with the fire safety plan.

4.18 Fire-fighting equipment: The building will comply with SANS 10007:2011. The fire-fighting equipment will be provided in accordance with the fire safety plan. The fire-fighting equipment will be provided in accordance with the fire safety plan.

4.19 Fire-fighting equipment: The building will comply with SANS 10007:2011. The fire-fighting equipment will be provided in accordance with the fire safety plan. The fire-fighting equipment will be provided in accordance with the fire safety plan.

4.20 Fire-fighting equipment: The building will comply with SANS 10007:2011. The fire-fighting equipment will be provided in accordance with the fire safety plan. The fire-fighting equipment will be provided in accordance with the fire safety plan.

4.21 Fire-fighting equipment: The building will comply with SANS 10007:2011. The fire-fighting equipment will be provided in accordance with the fire safety plan. The fire-fighting equipment will be provided in accordance with the fire safety plan.

4.22 Fire-fighting equipment: The building will comply with SANS 10007:2011. The fire-fighting equipment will be provided in accordance with the fire safety plan. The fire-fighting equipment will be provided in accordance with the fire safety plan.

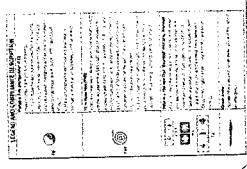
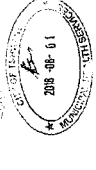
4.23 Fire-fighting equipment: The building will comply with SANS 10007:2011. The fire-fighting equipment will be provided in accordance with the fire safety plan. The fire-fighting equipment will be provided in accordance with the fire safety plan.

4.24 Fire-fighting equipment: The building will comply with SANS 10007:2011. The fire-fighting equipment will be provided in accordance with the fire safety plan. The fire-fighting equipment will be provided in accordance with the fire safety plan.

4.25 Fire-fighting equipment: The building will comply with SANS 10007:2011. The fire-fighting equipment will be provided in accordance with the fire safety plan. The fire-fighting equipment will be provided in accordance with the fire safety plan.

4.26 Fire-fighting equipment: The building will comply with SANS 10007:2011. The fire-fighting equipment will be provided in accordance with the fire safety plan. The fire-fighting equipment will be provided in accordance with the fire safety plan.

4.27 Fire-fighting equipment: The building will comply with SANS 10007:2011. The fire-fighting equipment will be provided in accordance with the fire safety plan. The fire-fighting equipment will be provided in accordance with the fire safety plan.



75mm Communication pipe to fire pump connection at 32 meters

Service pipe to fire pump connection:
 64 - (15 - 0.5) - (52 x 0.83)
 = 64 - 1 - 42.96
 = 55.44 (> 5 M is acceptable at fire pump connection)

Service pipe to Hose reel A:
 64 - (16 - 0.6) - (4.5 x 0.61)
 = 64 - 16 - 2.74
 = 45.26 (> 30 M is acceptable at the hose reel connection)

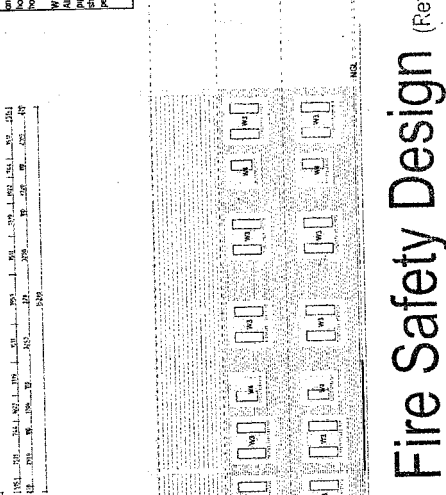
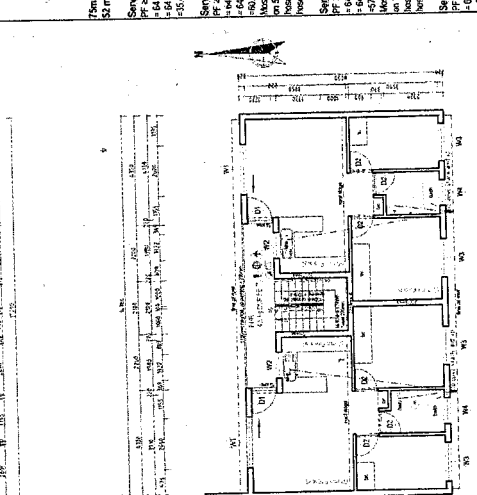
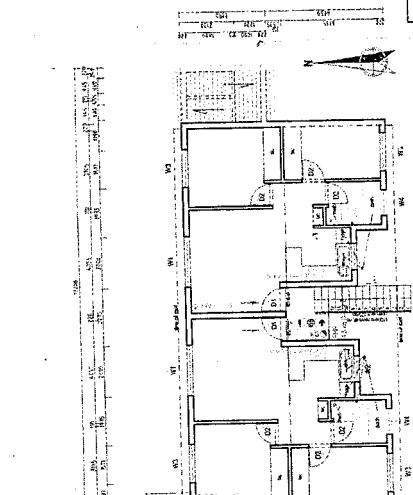
Service pipe to Hose reel B:
 64 - (25 - 0.8) - (4.5 x 0.61)
 = 64 - 25 - 2.74
 = 36.26 (> 30 M is acceptable at the hose reel connection)

Service pipe to Hose reel C:
 64 - (18 - 0.6) - (4.5 x 0.61)
 = 64 - 18 - 2.74
 = 43.26 (> 30 M is acceptable at the hose reel connection)

Water pipes:
 All fire-rated pipes to be 40 mm pipe for fire water supply. The pipes shall be protected in accordance with SANS 10007:2011. The pipes shall be protected in accordance with SANS 10007:2011.

RECOMMENDED

Pr. Eng 790366 2018 April 2016
 pr-0143-02



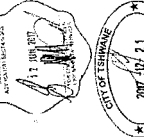
first floor plan (Block A) scale 1:100

first floor plan (Block B) scale 1:100

first floor plan (Block C) scale 1:100

Rational Fire Safety Design

(Refer to rational document)



Proposed new development for Esakho
 Projects, Erf 2191 Cultural Park,
 Erasmus X6, Brinkhuisstraat.

first floor plan
 elevation